

### ***Summary for lowering the speed limit on a Rains County Road:***

- Traffic volumes to determine if the county road is a major artery
- Number and types of intersecting roads, streets and other access points to see if lower speed is unreasonable?
- Roadway and road shoulder widths to determine speed is reasonable
- Traffic crash history to determine if speed is the cause
- Prevailing speeds (85th percentile) In this case we use 30 mph based on Transportation code 545.355
- Approve Petition from Property owners on the county road requesting to lower the speed limit.

#### ***Individual Request for Speed Limit Reduction:***

1. Must pass a petition.
2. The petition must have:
  - a) Name of Road (The road must be a County Road.)
  - b) Starting point
  - c) Ending point
  - d) Requested speed
3. For the petition to be valid it must contain the signatures of 80% of the property owners from the starting point to the ending point.
4. Turn the petition in to the Rains County Commissioners Court.

Please call the Rains County Road and Bridge Department at (903) 473-5099 with any questions regarding the petition process.

Sec. 251.154. MAXIMUM REASONABLE AND PRUDENT SPEEDS ON COUNTY ROADS. (a) The commissioners court of a county, by order entered on the minutes of the court, may determine and set a maximum reasonable and prudent speed for a vehicle travelling on any segment of a county road, including a road or highway intersection, railroad grade crossing, curve, or hill.

(b) In determining the maximum reasonable and prudent speed, the commissioners court shall consider all circumstances on the affected segment of the road, including the width and condition of the road surface and the usual traffic on the road.

(c) The maximum reasonable and prudent speed set by the commissioners court under this section may be lower than the maximum speed set by law for a vehicle travelling on a public highway.

(d) A speed limit set by the commissioners court under this section is effective when appropriate signs giving notice of the speed limit are installed on the affected segment of the county road.

Acts 1995, 74th Leg., ch. 165, Sec. 1, eff. Sept. 1, 1995.

## **Transp. Code Section**

### **545.355**

# Authority of County Commissioners Court to Alter Speed Limits

(a)

The commissioners court of a county, for a county road or highway outside the limits of the right-of-way of an officially designated or marked highway or road of the state

highway system and outside a municipality, has the same authority to increase prima facie speed limits from the results of an engineering and traffic investigation as the Texas Transportation Commission on an officially designated or marked highway of the state highway system.

**(b)**

The commissioners court of a county may declare a lower speed limit of not less than:

**(1)**

30 miles per hour on a county road or highway to which this section applies, if the commissioners court determines that the prima facie speed limit on the road or highway is unreasonable or unsafe; **or**

**(2)**

20 miles per hour:

**(A)**

in a residence district, unless the roadway has been designated as a major thoroughfare by a city planning commission; **or**

**(B)**

on a county road or highway to which this section applies that is located within 500 feet of an elementary, secondary, or open-enrollment charter school or an institution of higher education, if approved under Section 545.357 (Consideration of Speed Limits Where Certain Schools Are Located).

**(c)**

The commissioners court may not modify the rule established by Section 545.351 (Maximum Speed Requirement)(a) or establish a speed limit of more than 70 miles per hour.

**(d)**

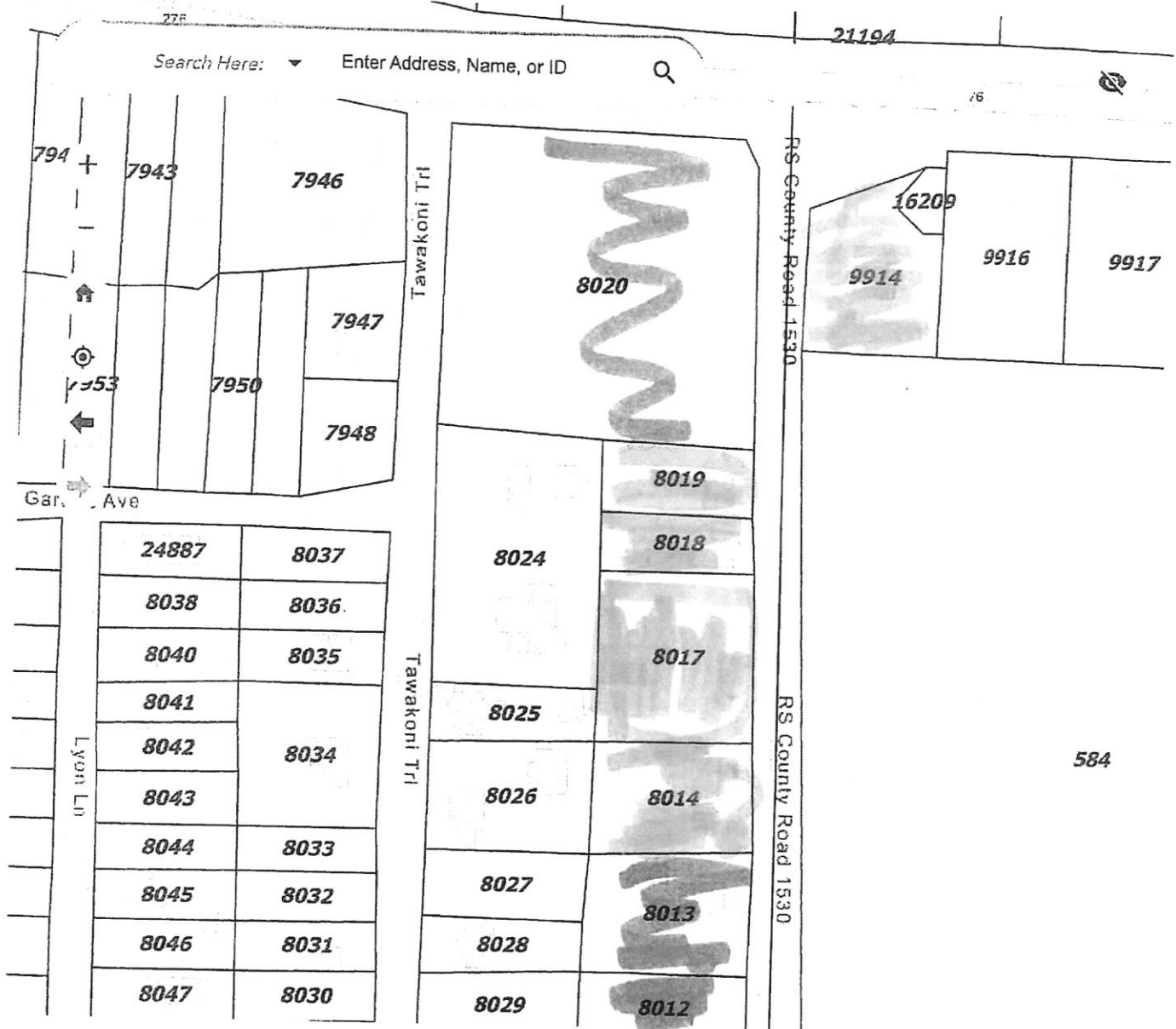
The commissioners court may modify a prima facie speed limit in accordance with this section only by an order entered on its records.

**(e)**

The commissioners court of a county with a population of more than 2.8 million may establish from the results of an engineering and traffic investigation a speed limit of not more than 75 miles per hour on any part of a highway of that county that is a limited-access or controlled-access highway, regardless of the location of the part of the highway. Acts 1995, 74th Leg., ch. 165, Sec. 1, eff. Sept. 1, 1995. Amended by Acts 1997, 75th Leg., ch. 58, Sec. 1, eff. May 9, 1997; Acts 1997, 75th Leg., ch. 833, Sec. 1, eff. June 18, 1997; Acts 2003, 78th Leg., ch. 852, Sec. 1, eff. June 20, 2003. Amended by:

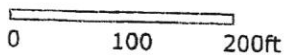
PETITION TO LOWER SPEED LIMIT TO 20 M.P.H. RS.CR.1530

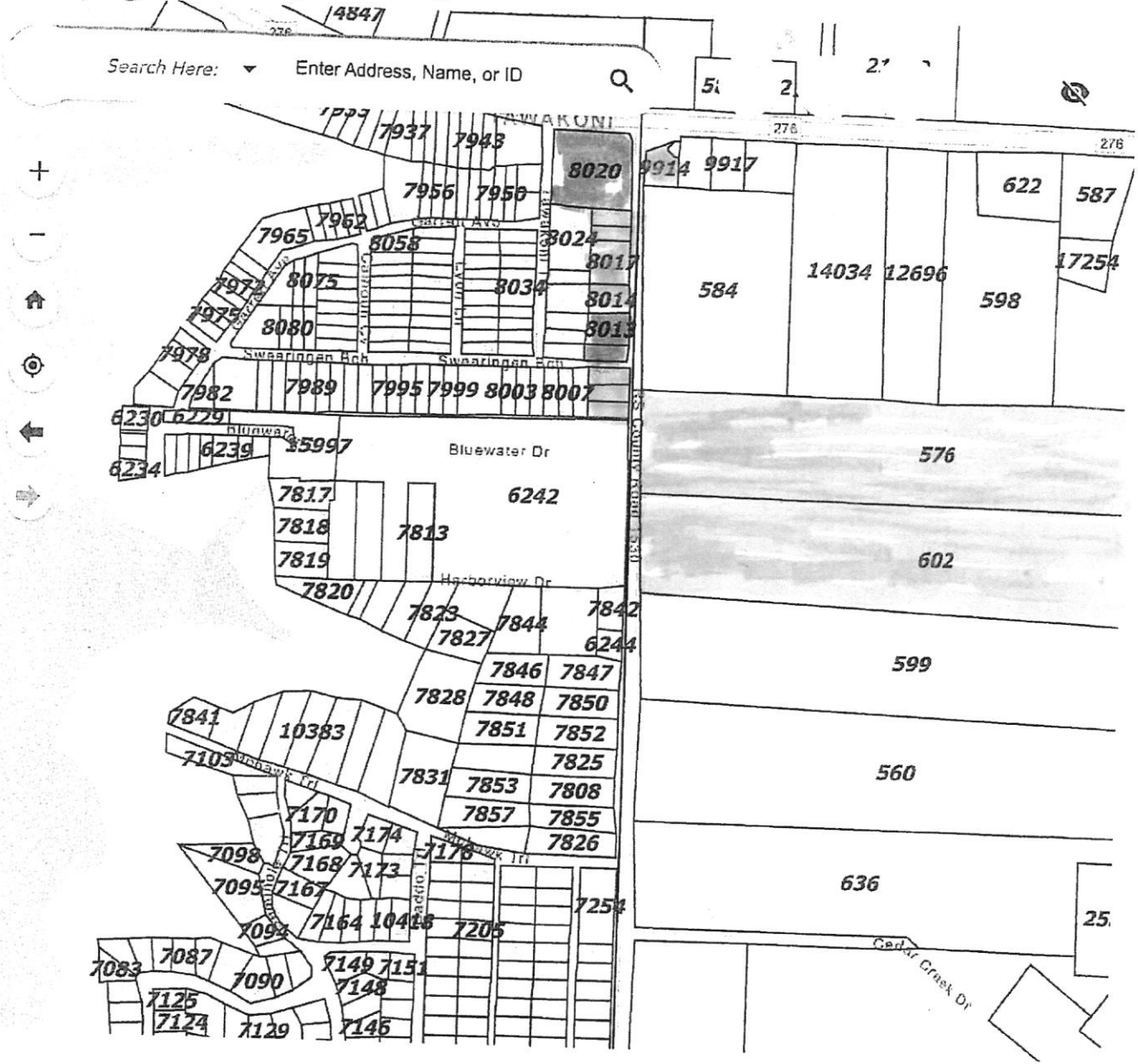
NO	SIGNATURE	PHONE	NAME	ADDRESS	PROPERTY I.D. & DATE
1	Jerry Smith	214 562776	Jerry Smith	150 RS CR 1530	8019 4/21/25
2	Miguel Guevara	469-602-8110	Miguel Guevara	220 RS CR 1530	8014 2/25 4/21/25
3	Carol Roland	214-477-5115	Carol Roland	109 Swearingen Beach/1530	8009, 8010 8011 4/21/25
4	Deborah D Bozeman	913-268-6590	Deborah D Bozeman	240 Swains Pt	576 4/22/2025
5	Mike Johnny Thomas	972-533-7140	Mike Johnny Thomas	1712 Beach Rd	662 9914
6	Don Phelps Sr	909-217-4244	Don Phelps Sr	160 RS CR 1530	8017, 8018 - 08/4/25
7					
8					
9					
10					
11					
12					
13					
14					
15					
16					
17					
18					
19					
20					



Page 1 of 2

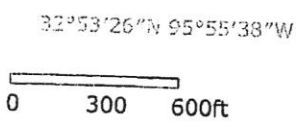
32°53'42"N 95°55'40"W





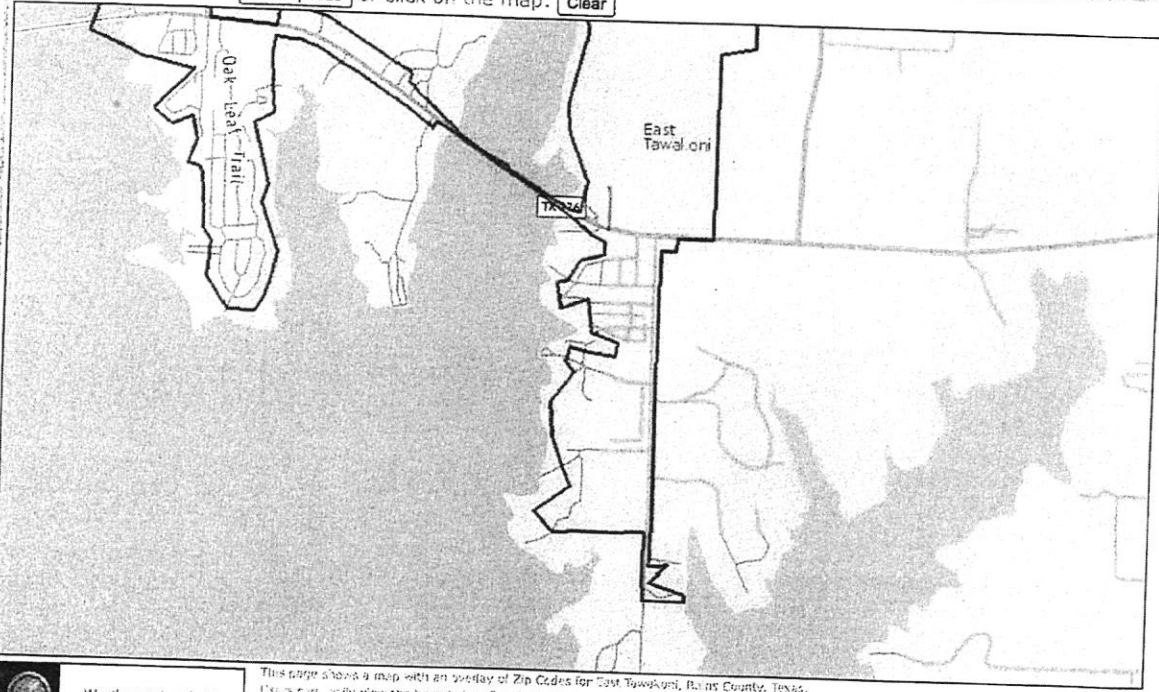
Property Currently Owned By Reality Corp

Property Owned By Local Members Of Community



Key Zip Code

or click on the map.



Advertisement

- Nearest Zip Codes
- 75472 - Point, TX
  - 75453 - Lone Oak
  - 75440 - Emory, TX
  - 75169 - Will, TX
  - 75407 - [unclear]

Advertisement



Weather with a click!

This page shows a map with an overlay of Zip Codes for East Tawakoni, Bexar County, Texas. Use a cursor to view the boundaries of each Zip Code.

[CONTACT US](#) [Instructions](#) [Privacy Policy](#) [RadarNow! \(App\)](#)

East Tawakoni, Bexar County, Texas Zip Code Polygon Map Version 4.2 Copyright © 1996-2022 USNamecode LLC. All rights reserved.





***Petition For Lowering The Speed limit on Rains Co. Road 1530 From 30 M.P.H. Down to 20 M.P.H.in the Heavily Populated Area with Homes Directly Near the Road . One Household Has Six Small Children Whom Live there Three under the Age Of Three.***

***Upon Last Measurement which was Five years ago The road has 1500 Vehicles a Day Many of Whom Speed By These Homes at Unsafe Speeds , Quite a few can be seen Drinking From Open Alcohol Containers And That is Evidenced By The Litter Up and Down 1530 Us Residents Pick Up all kinds of Bottles and Can's From our yards and the Ditch Across from Them.***

**Proposed Speed limit Change would take effect Immediately After Turning Onto RS.CR.1530 Off Of SH276 And will remain 20M.P.H. Until BlueWater DR.**

**To have Consideration for lowering a speed limit on a County road it must be presented to Commissioner's Court And have An Attached Petition With 80% Of the Signatures By land Owners Along the Adjacent Stretch Of Said Road RS.CR.1530 Which Is Under The Jurisdiction Of the City Of East Tawakoni Based Off City Limits Maps Found Online , In Addition to This Proposed Change I Have Secured The use Of the City Of Emory's Radar Speed Trailer Which Features a LED display showing your speed and will blink if it is in Excess of the Posted Limit , Chief Tom Parsons Said ABSOLUTLEY! And was more than willing to Loan it to E.T.P.D. We Just Need Chief South To Make a Request and he will grant its use to Our Town !!! Very Generous Of Chief Parsons & The City Of Emory To Loan Such a Valuable City Asset to A Neighboring Municipality**



8) THE MATTER OF DISCUSSING AND TAKING NECESSARY ACTION REGARDING CITY OF EAST TAWAKONI *DEDICATING THE CITY'S PORTION OF CR-1530 TO RAINS COUNTY* CAME TO THE ATTENTION OF THE COURT.

A MOTION BEING MADE BY COMMISSIONER GARY BISHOP, DULY SECONDED BY COMMISSIONER VIRGIL MCENTURFF TO *ACCEPT THE ROAD, SUBJECT TO APPROVAL BY CITY OF EAST TAWAKONI.*

ALL COMMISSIONERS VOTING AYE AND THERE BEING NO VOTES NAY, MOTION CARRIED UNANIMOUSLY.

9) THE MATTER OF EXAMINING AND APPROVING *LINE ITEM TRANSFERS* AS SUBMITTED BY THE COUNTY TREASURER CAME TO THE ATTENTION OF THE COURT.

*NO LINE ITEM TRANSFERS SUBMITTED*

10) THE MATTER OF EXAMINING AND APPROVING *BUDGET AMENDMENTS* AS SUBMITTED BY THE COUNTY TREASURER CAME TO THE ATTENTION OF THE COURT.

*NO BUDGET AMENDMENTS SUBMITTED*

11) THE MATTER OF EXAMINING AND APPROVING *WARRANTS AUTHORIZING PAYMENT OF ACCOUNTS* AS

The 2025 Texas Manual on Uniform Traffic Control Devices (TMUTCD), which becomes effective on **January 18, 2026**, dictates the standards for traffic control devices, including speed limit signs on county roads. Under Texas law, the default prima facie speed limit on unposted county roads is 60 mph, and while commissioners courts have the authority to lower this, they must conform to TMUTCD standards.

Texas Department of Transportation (.gov) +4

### **Key Aspects for Lowering County Road Speed Limits (2026):**

- **Enforcement Requires Signage:** Reduced speed limits (such as 30 or 20 mph) on county roads are only enforceable when the county properly installs signs complying with the 2025/2026 TMUTCD.
- **Formal Process:** Counties cannot set county-wide speed limits. They must be set on a road-by-road basis, requiring a public hearing and a vote by the Commissioners Court.
- **Lowering Without Studies:** Commissioners may lower speed limits without a full engineering study to:
  - **30 mph:** On roads deemed unreasonable or unsafe, or in a residential district.
  - **20 mph:** In a residential district, or within 500 feet of a school/institution of higher education.
- **Urban Districts:** A "20 mph" limit applies to county roads in "urban districts," defined as areas with dwellings or commercial buildings at intervals of less than 100 feet for at least a quarter mile.
- **Engineering Investigation Requirement:** Any reduction below the statutory minimums (e.g., lower than 30 mph on a standard road) generally requires an engineering and traffic investigation.